

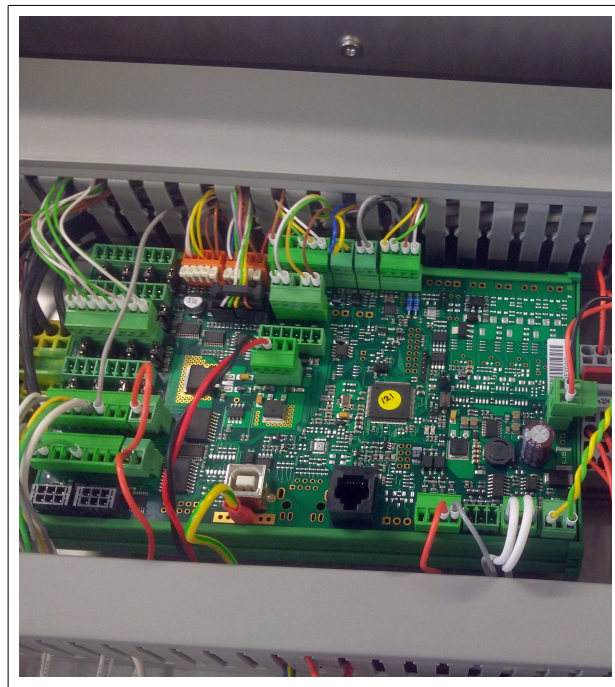
Standard PLC with integrated communication and highly efficient processing ability for your control systems.

Features

- ✓ 32-bit MCU (STM32F427) for high-speed processing
- ✓ Analog I/O Built-in 12-bit 5 analog inputs
- ✓ Built-in (RS-232, RS-485, CAN) ports
- ✓ external **1-wires sensors** are supported (DS18B20 etc.)
- ✓ external **I2C/TWI sensors** are supported (LM75, SHT31, etc.)
- ✓ industry power input capable (DC 8-32V)
- ✓ simple MODBUS (RS485 or Ethernet) communication
- ✓ 2 analog inputs for Pt100 temperature input
- ✓ test and service modes are supported manually on PC application
- ✓ OpenFW is available for developers
- ✓ **DIN rail mountable**

The DRYCOOL Control Unit is a PLC with a massive set of inputs and outputs, sensors, motor drivers, secure firmware with watchdog support, mass storage and a comfortable user interface. It is manufactured and tested under strict conditions, every unit having a unique electronic serial number and MAC address for network integration.

The DRYCOOL is designed to control industrial processes in various industries. The primary use of the unit is to monitor non-electrical quantities (temperature, humidity, pressure, light) and to control actuators to be regulated (motors, compressors, control valves, etc.).



The DRYCOOL supports the slave function of the MODBUS communication, which is an open network system for factory automation, and thereby is compatible with various MODBUS master devices of other manufacturers.

Connectivity	Count
I2C/TWI Bus	4
1-wire Bus	1
Galvanic Isolated Inputs	2
Inputs	20
Inputs (analog 12bit ADC)	5
Outputs (inductive loads)	16
Outputs (4-20mA current loop)	4
Outputs (0-10V DAC)	2
RTD (Pt100) Input	2